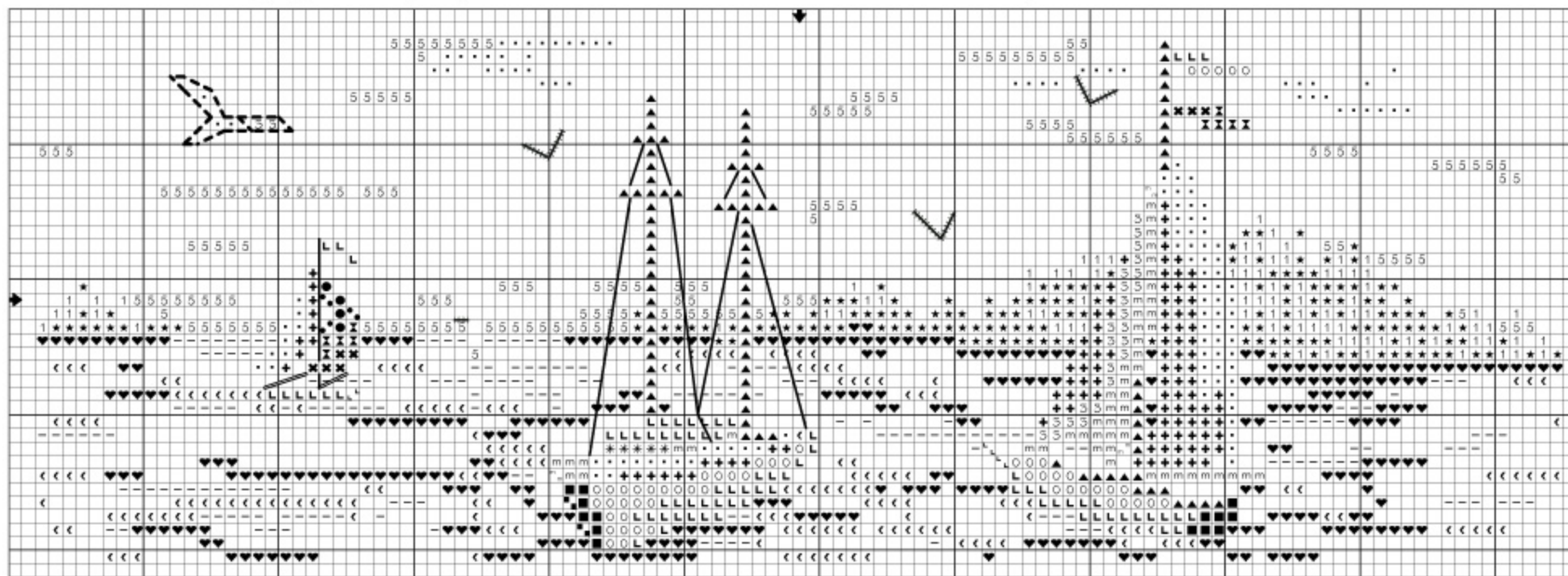


*This towel border is designed to fit on our 14-ct Aida insert Kitchen Towels.  
To purchase a kitchen towel for this design,  
visit [janlynn.com/crafters-pride](http://janlynn.com/crafters-pride)*



113w X 39h Stitches  
14 Count - 8" w x 2-3/4" h



*The DMC floss used in this design can be purchased on our [janlynn.com](http://janlynn.com) website for 39 cents a skein.*

Cross stitch / Half Cross stitch – two ply

Half Cross stitches are indicated by small symbols placed diagonally.

Example:



Work the Half Cross stitch in the diagonal direction of the symbols.

Example:



DMC COLOR

- White White
- 309 Rose-Dark
- ▲ 310 Black
- \* 317 Pewter Gray
- m 318 Steel Gray-Light
- 3 415 Pearl Gray
- L 498 Christmas Red-Dark
- ★ 501 Blue Green-Dark
- 1 503 Blue Green-Medium

DMC COLOR

- ⌘ 676 Old Gold-Light
- ✕ 729 Old Gold-Medium
- + 762 Pearl Gray-Very Light
- < 775 Baby Blue-Very Light
- 814 Garnet-DK
- 922 Copper-Light
- 5 948 Peach-Very Light
- 3325 Baby Blue-Light
- ♥ 3755 Baby Blue

Back stitch – one ply

- ##### 310 Black
- 317 Pewter Gray
- 318 Steel Gray-Light
- 415 Pearl Gray

This design is not to be duplicated, sold, modified or redistributed in any medium, including scanning and posting on the internet without written permission from The Janlynn Corporation.